



# SRM9000

## Accessories

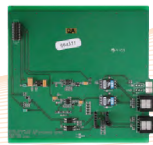
### OPTION BOARDS



P25 Upgrade Board



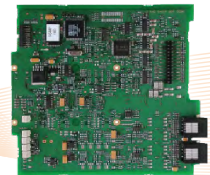
Systems/Encryption Interface Board



600 Ohm Balanced Audio Interface Board



ASI Board with GPS



Dual Head/ Transceiver & Serial/ Parallel I/ O Board

### AUDIO ACCESSORIES



Desktop Bases



Handsfree Kit



Loudspeaker square or slim



Desktop Microphone

### MISCELLANEOUS ACCESSORIES & CABLES



Field Encryption Programmer



Remote PTT Switch



100m Control unit extender kit



Quick Release Cradle

### Also available:

- ▶ USB programming lead
- ▶ Serial programming lead
- ▶ Repeater crosslink cable
- ▶ Microphone extension lead



**simoco**  
wireless solutions

## SRM9000 Mobile Radio Solutions

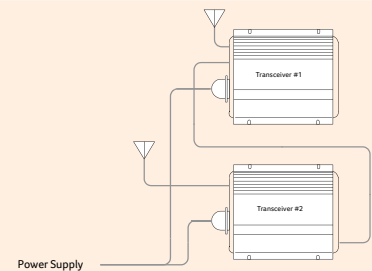
The SRM9000 series of radios can have different option boards installed to allow a range of different configurations as in the examples below.

### Transparent P25 or Simple Analog Repeater

This simple configuration allows repeating of analog or P25 digital radio traffic.

#### Ideal for:

- Deployment in vehicle to extend portable radio range
- Extension of infrastructure coverage

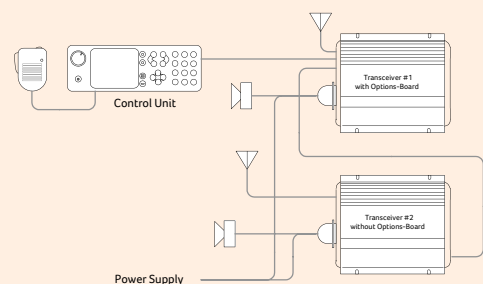


### Dual transceivers using common control unit

This configuration allows two transceivers to be connected to one control head. Transceivers may be LMR or Trunked (or one of each).

#### Ideal for:

- Vehicles with limited mounting space
- Switching between 2 types of networks
- Cross-band or cross-mode

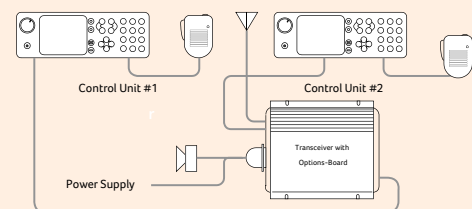


### Dual control units with a common transceiver

This configuration allows two control units to be connected with one transceiver. Control units may be either SRM9030, SRM9022 or SRM9020.

#### Ideal for:

- Ambulance, fire truck, locomotives or any other vehicles that require multiple user interface



**Other configurations available:** ► GPS interface ► Taxi interface  
► 4-wire interface ► 600 Ohm interface ► D-MAP (Mobile Repeater System)

All specifications are subject to change without prior notice.

Field House  
Uttoxeter Old Road  
Derby  
DE1 1NH  
Tel UK: 08717 411 050  
Tel International: +44 (0) 1332 375 500  
customer.service@simocowirelessolutions.com

**AMERICAS** 1835 E. Hallandale Beach Blvd.  
Hallandale Beach  
FL 33009, USA  
americas@simocowirelessolutions.com

1270 Ferntree Gully Rd  
Scoresby, VIC 3179  
Tel: +61 (0) 3 9730 3999  
Fax: +61 (0) 3 9730 3964  
vic@simocowirelessolutions.com

**Xmode**  
Analogue P25 Conventional  
MPT Trunking P25 Trunking

**MPT**  
4444

**P25**  
DIGITAL • DIGITAL WIRELESS • SANS FIL  
NUMERIQUE • INALAMBRICO

**simoco**  
wireless solutions